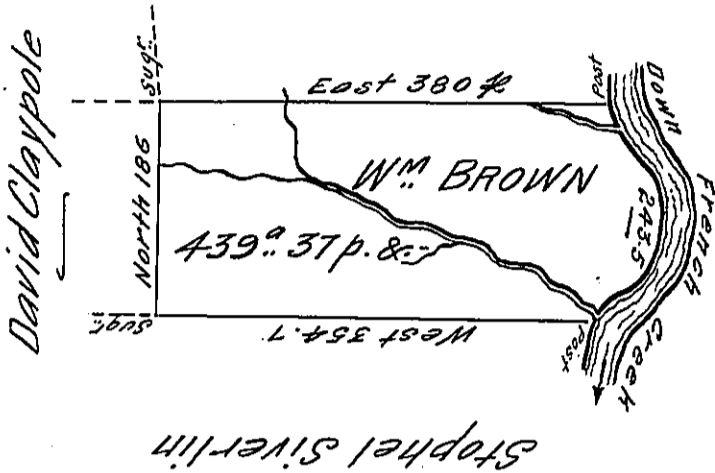


James Cook

River Courses
 South 16.1
 S 20° E. 26
 S 47½° E. 42
 S 27° E 32
 S 5½ W. 24
 S 35 W. 28
 S 63½ W. 22
 S 72½ W. 24
 S 32½ W. 29.4
243.5 #



Situate on the West Side of French Creek in
 Allegheny County Containing 439.37 p. and allowance
 of Six Cent for Roads &c Surveyed the 13th Day
 of October 1794, In pursuance of his improvement
 Dated the 10th day of March 1793 —

Wm Power D^r. Sr.

To Daniel Brodhead Esq^r.
 Surveyor General }

IN TESTIMONY that the above is a copy of the original remaining on file in
 the Department of Internal Affairs of Pennsylvania, made
 conformably to an Act of Assembly approved the 16th day of
 February, 1833, I have hereunto set my Hand and caused
 the Seal of said Department to be affixed at Harrisburg,
 this second day of May 1906

James P. Brown
 Secretary of Internal Affairs.